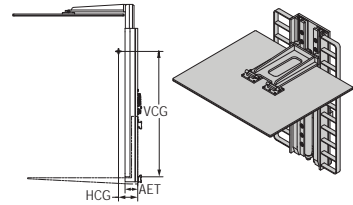


## LSS Series Load Stabilizers

- ▶ Articulating rubber pad. Load backrest included
- ▶ Dual pressure relief valves
- ▶ Ideal for beverage and warehousing industries



### Load Stabilizers: Without Forks, 1 Function

Model Number	Opening Range (in)	Pad Size W x L (in)	Backrest Size W x H (in)	Mounting Class	Lost Load AET (in)	Weight (lb)
LSS-E35-3030		30 x 30				
LSS-E35-3036	35-65	30 x 36	34 x 60	II	4.0	Consult
LSS-E35-3636		36 x 36				Factory
LSS-E35-3642		36 x 42				
LSS-E46-3030		30 x 30				
LSS-E46-3036		30 x 36				
LSS-E46-3636	46-86	36 x 36	34 x 60	II	4.0	Consult
LSS-E46-3642		36 x 42				Factory
LSS-E46-4242		42 x 42				

### Recommended Hydraulic Supply

Model Number	Flow (gpm)	Max psi
All Models	5-7	2,500

Hydraulic flow less than minimum may reduce operating speed and/or cause irregular arm movement. Higher flow may result in heat build-up, erratic operation and shortened hydraulic system life.

### Minimum Truck Carriage Width

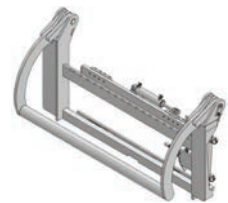
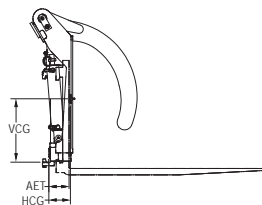
Model Number	Body Width (in)	Minimum Truck Carriage Width (in)
All models	34	20

### Optional Equipment

Description
Other pad dimensions or opening ranges
Fold-down pad/fold-up forks
Bottled water configuration
Tailgate beverage unit
Less load backrest
Sideshifting

## End Hold Down

- ▶ Stabilize extra wide loads when traveling
- ▶ Uses your truck's forks
- ▶ Holds a wide variety of diameters and bundles
- ▶ Larger capacity available



### Hook Carriages, 2 Functions

Model Number	Capacity @ 24" Load Center	Fork Spread Out to Out (in)	Mounting Class	List Price
QHSC090B60	9,000 lb	60	III	
QHSC155C44	15,000 lb	44	IV	

Forks not included.